

# *Lustre Designs Co.*

*Absolute Brilliance of Light*



LUSTRE  
*Absolute Brilliance of Light*



## WHO IS LUSTRE

Lustre is the brand that you can trust to create unique and timeless gem cuts that you have always desired to incorporate into your jewelry.

## OUR STORY

We are a high quality gem cutting company based in Sri Lanka.

'At Lustre we want to tell the world a story through our eccentrically faceted gems.'

## THE BRAND

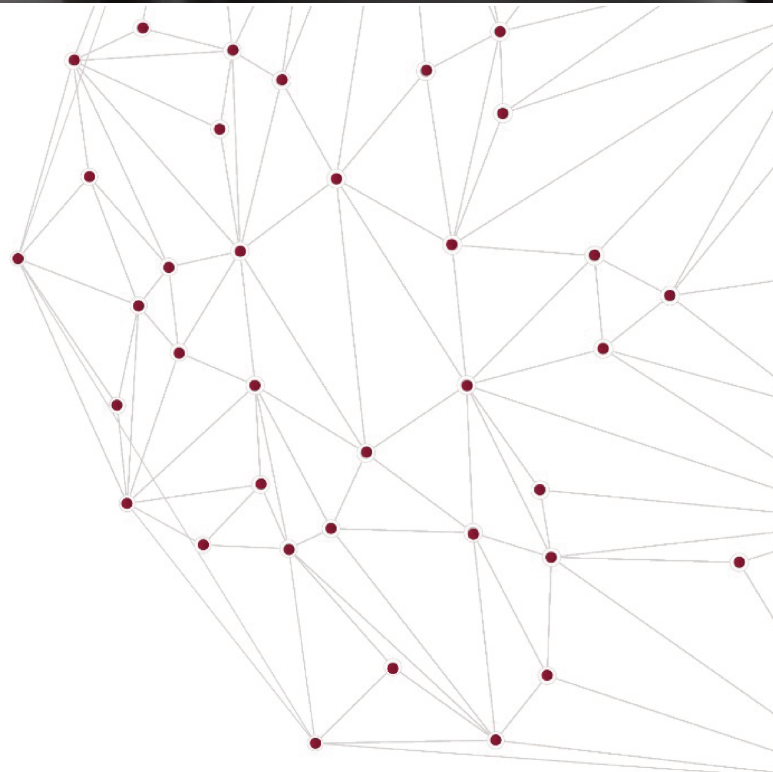
The key goal of Lustre Designs Co. is to highlight and educate both consumers and businesses within the industry, the importance of the cut associated with the gem stone.

## OUR PROMISE

We promise our customers a high quality finish and a sustainable company, which not only provides valuable industry insights but also provides jobs to skilled artists in the Sri Lankan gem and jewelry industry.

## OUR MISSION

To satisfy client's expectations is a job half done, to exceed those expectations is complete work.







## OUR PEOPLE

LDC is a tribute to those who showcase their skill of fine craftsmanship in gem cutting.

## RELIABILITY

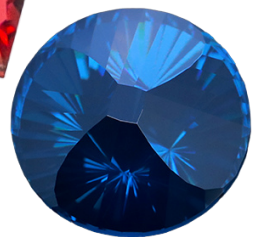
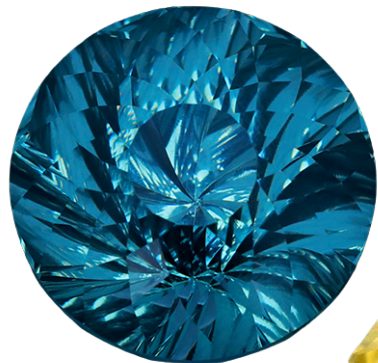
LDC is a family run business currently in 2nd generation of management, working with long term clientele. We ensure exclusivity in designing and reliability of confidentiality. We also provide research and development solutions with continuous support services.

## EXPERIENCE

We provide consistent quality through training, production planning, prototyping and implementing processes that adhere to ISO 9001 - 2015. Our employees average over 15 years of services and have conducted over 7000 trials.

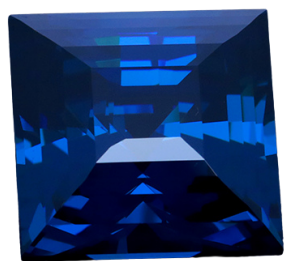






OUR DESIGNS

We create bespoke designs for gems  
which are exclusive to only our  
customers in the world.







## OUR SERVICES

Re-cutting gems

Sourcing rough stones

Consultation for value addition of rough lots

Facilitating certification & authentication of  
gems

Calibrate gem cutting  
(0.9mm +12mm & above)

Bespoke gem faceting and designs

Research & Development on prototype gem  
designs

Fully equipped facility for achieving an efficient  
value addition process for precious or semi-  
precious material

CAD designing

3D Printing designs

Tracking reports on production & delivery



## HOW TO WORK WITH OUR DESIGNERS

At Lustre Designs Co, we take great care to cut and polish gems. We take preserving the preciousness and personality of every stone very seriously and ensure that they receive the highest possible graded value.

We pay special attention to reducing wastage and retaining the highest carat weight for the final product.

## PICK YOUR GEM

We supply and source precious or semi precious rough stones to suit our clients needs or our clients can supply their own.

## SELECT A DESIGN

Select from the list of unique designs that are developed inhouse to suit your preferences.

Alternatively, we are able to work with our clients to develop a bespoke gem design that achieves the desired purpose and remains exclusive to each individual.

## PROCESSING YOUR DESIGNED CUT

The final step of the process is where we craft the carefully curated gem design with our expert designers and provide tracking in each step of the process that highlights the carat weight preservation and wastage reports.





# AWARDS AND RECOGNITION

ISO 9001 Certify  
2015

Ruby Award for Best Lapidary Art  
*Jewels 2019*

Youngest Entrepreneur of the Year  
*Sabaragamuwa Province 2019*

Best Woman Entrepreneur Gold Award  
*Sabaragamuwa Province 2020*

NCE Export Bronze Award  
*28th National Chamber of Exporters 2020*

CNCI National Silver Excellence Award  
*Ceylon National Chamber of Industries (CNCI) 2020*

CNCI National Bronze Excellence Award  
*Ceylon National Chamber of Industries (CNCI) 2020*

Export Management Sector Excellence Award Natural  
Resources  
*South Asia Business Award 2021*

Best Woman Leadership Excellence in Entrepreneurship  
*South Asia Business Award 2021*

Deshamanya Honorary Award for Community Service  
*Dharmashakthi Social Services Foundation 2021*

NCE Export Silver Award  
*29th National Chamber of Exporters 2021*

CNCI National Gold Excellence Award  
*Ceylon National Chamber of Industries (CNCI)*

Honorary Award Jewelry  
*Jewelry World Awards 2021*







[inquire@lustredesignsco.com](mailto:inquire@lustredesignsco.com)

[lustredesignsco.com](http://lustredesignsco.com)

+94 77 448 5092



[@lustredesigns.co](https://www.instagram.com/lustredesignsco)



[@lustredesignsco](https://www.facebook.com/lustredesignsco)

